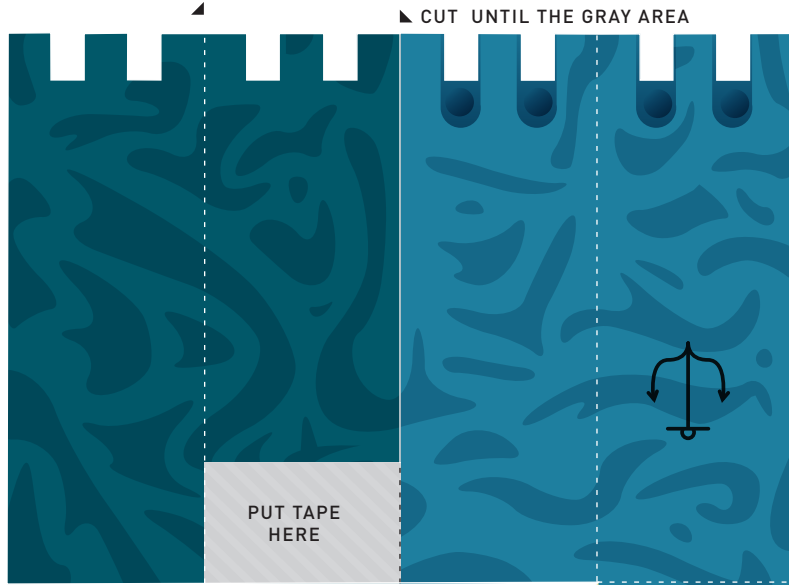
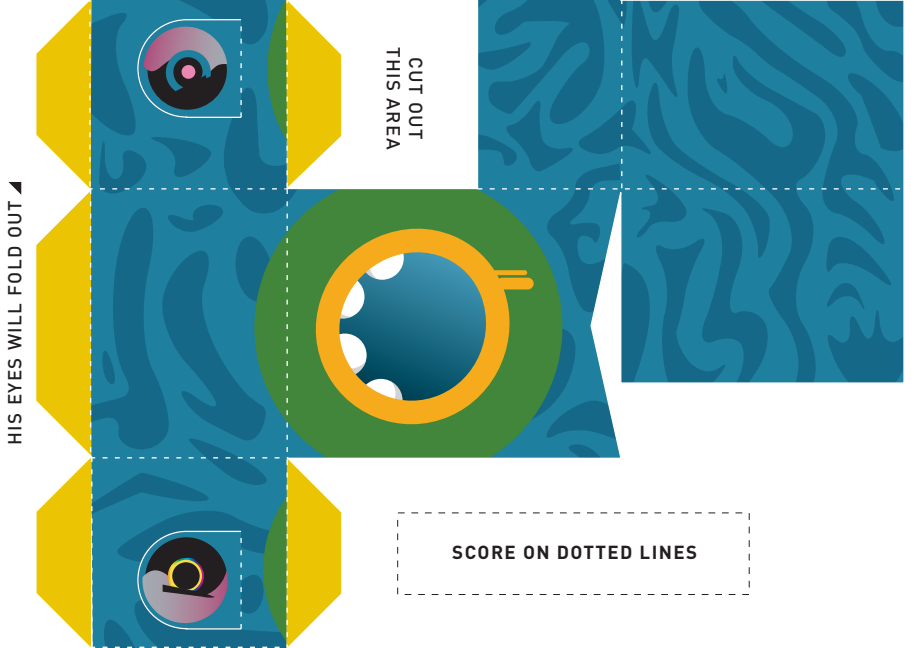
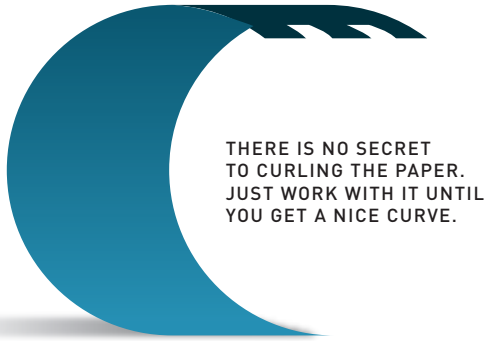
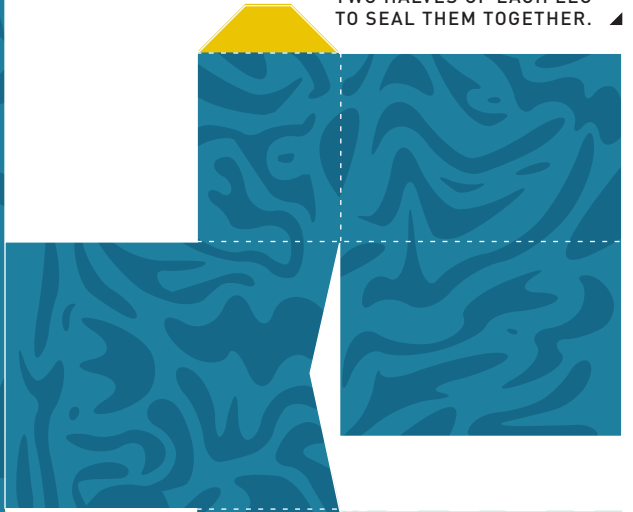


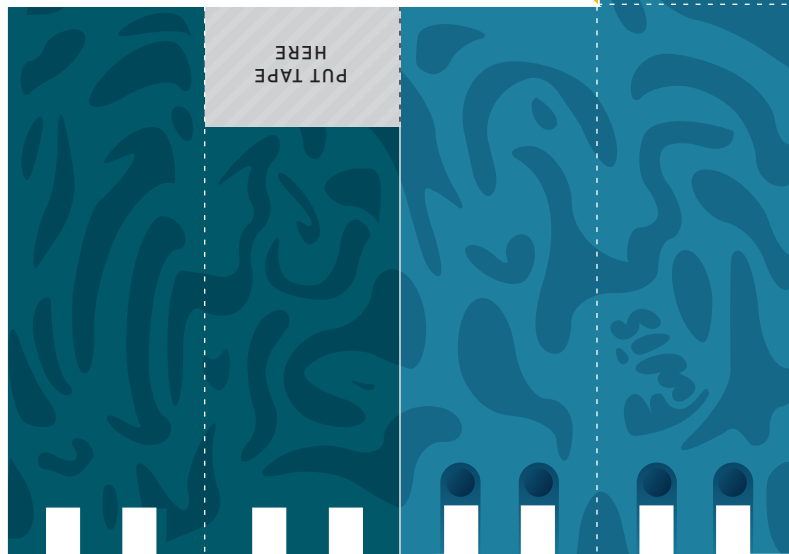
PUT A PIECE OF DOUBLE-SIDED TAPE BETWEEN THE TWO HALVES OF EACH ARM BETWEEN THE TWO HALVES OF EACH ARM TO SEAL THEM TOGETHER.



PUT A PIECE OF DOUBLE-SIDED TAPE BETWEEN THE TWO HALVES OF EACH LEG TO SEAL THEM TOGETHER.



ONCE YOU HAVE THE TWO HALVES OF EACH ARM SEALED TOGETHER, YOU'LL HAVE TWO ARMS JOINED BY A THIN STRIP OF PAPER. PUT SOME DOUBLE-SIDED TAPE BETWEEN THEM IN THE DESIGNATED AREA AND SQUEEZE THEM TOGETHER.



CUT UNTIL THE GRAY AREA